

2010 Outcomes Report



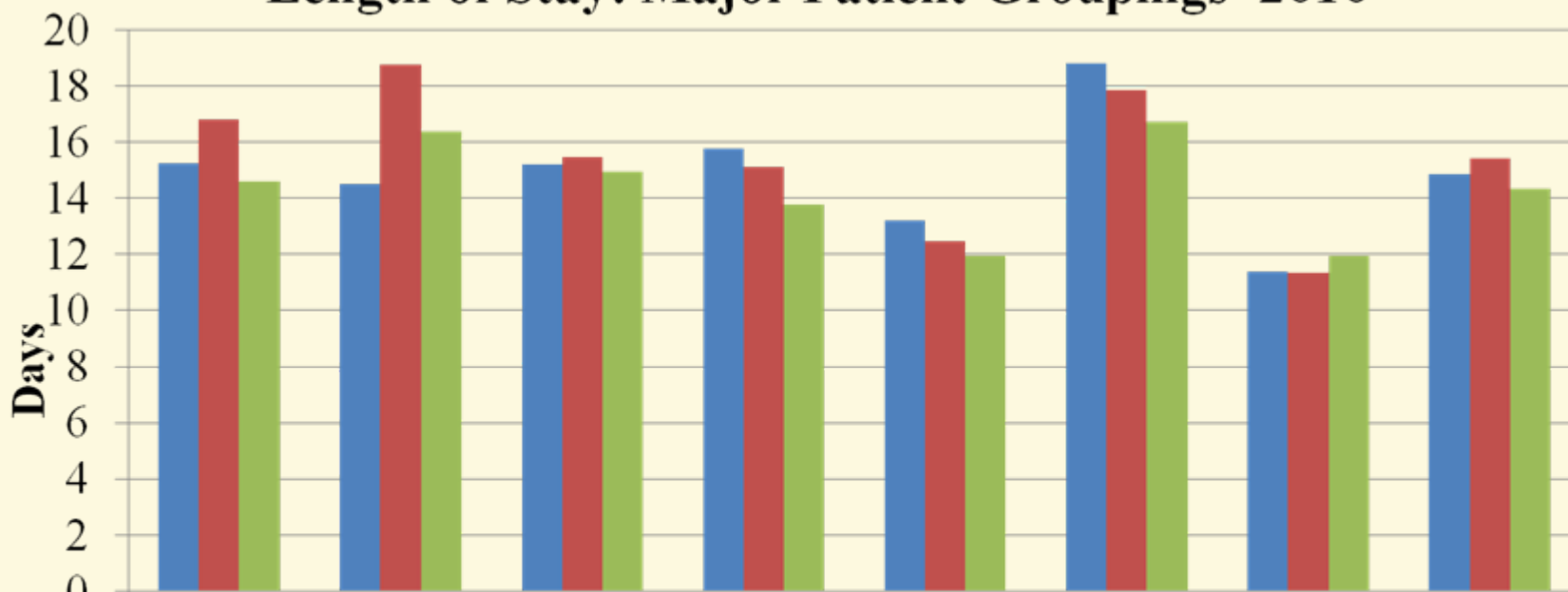
2010 Outcomes Report

- *This report provides data and information about outcomes achieved by inpatients of Northeast Rehabilitation Hospital from January 1, 2010 to December 31, 2010.*
- *The information within this report is based upon data submitted to eRehabData, American Medical Rehabilitation Providers Association Silver Spring, MD.*
- *This report also includes data regularly collected and analyzed by Northeast Rehabilitation Hospital's Management Team.*



2010 Outcomes Report

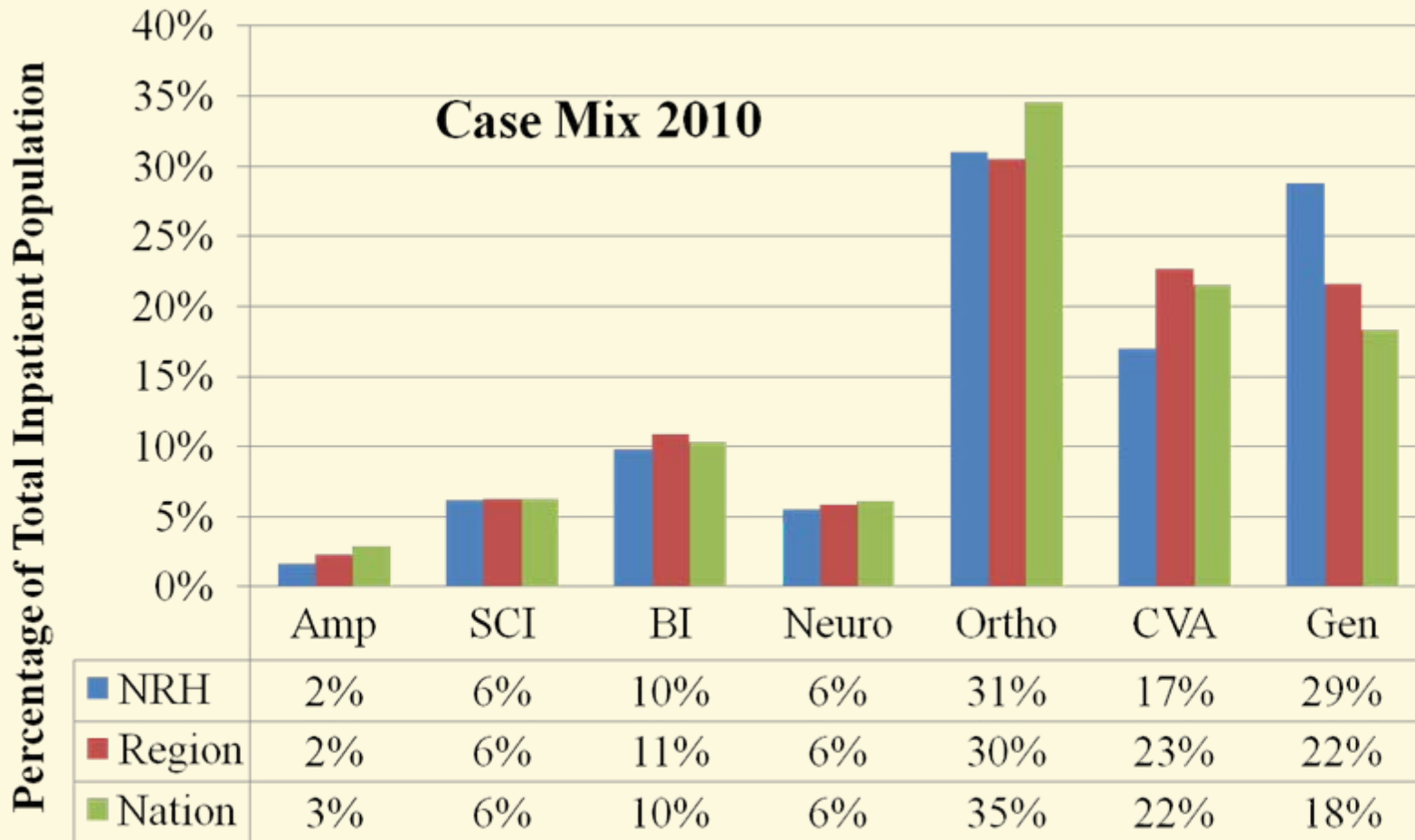
Length of Stay: Major Patient Groupings 2010



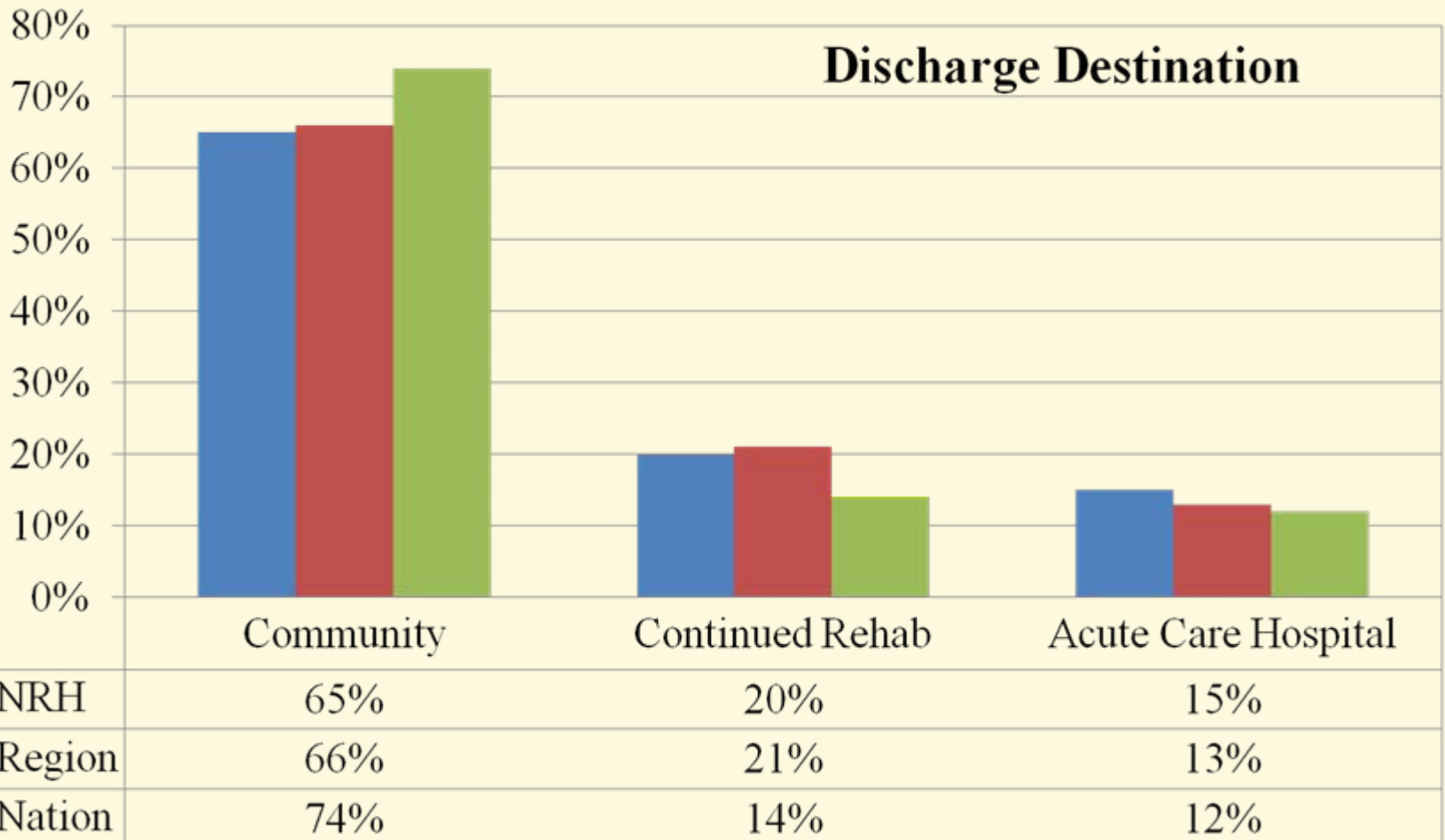
	Amp	SCI	BI	Neuro	Ortho	CVA.	Gen	Total
■ NRH	15.24	14.5	15.2	15.76	13.2	18.8	11.39	14.87
■ Region	16.84	18.76	15.48	15.12	12.46	17.88	11.36	15.41
■ Nation	14.62	16.39	14.94	13.79	11.95	16.74	11.97	14.34



2010 Outcomes Report



2010 Outcomes Report



Community: includes Home, Assisted Living and Transitional Living

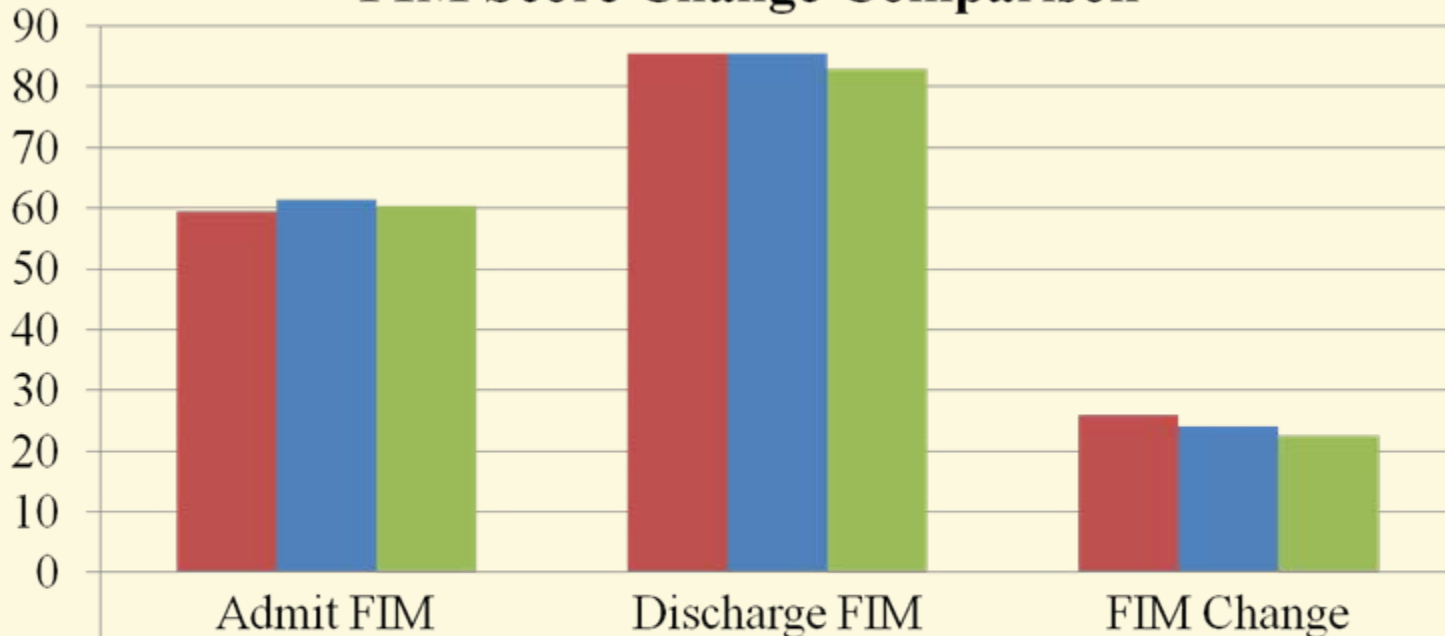
Acute: includes Acute Medical Care at own or other facility

Continued Rehab: includes Subacute, Skilled Nursing, Chronic Hospital and other Acute Rehab



2010 Outcomes Report

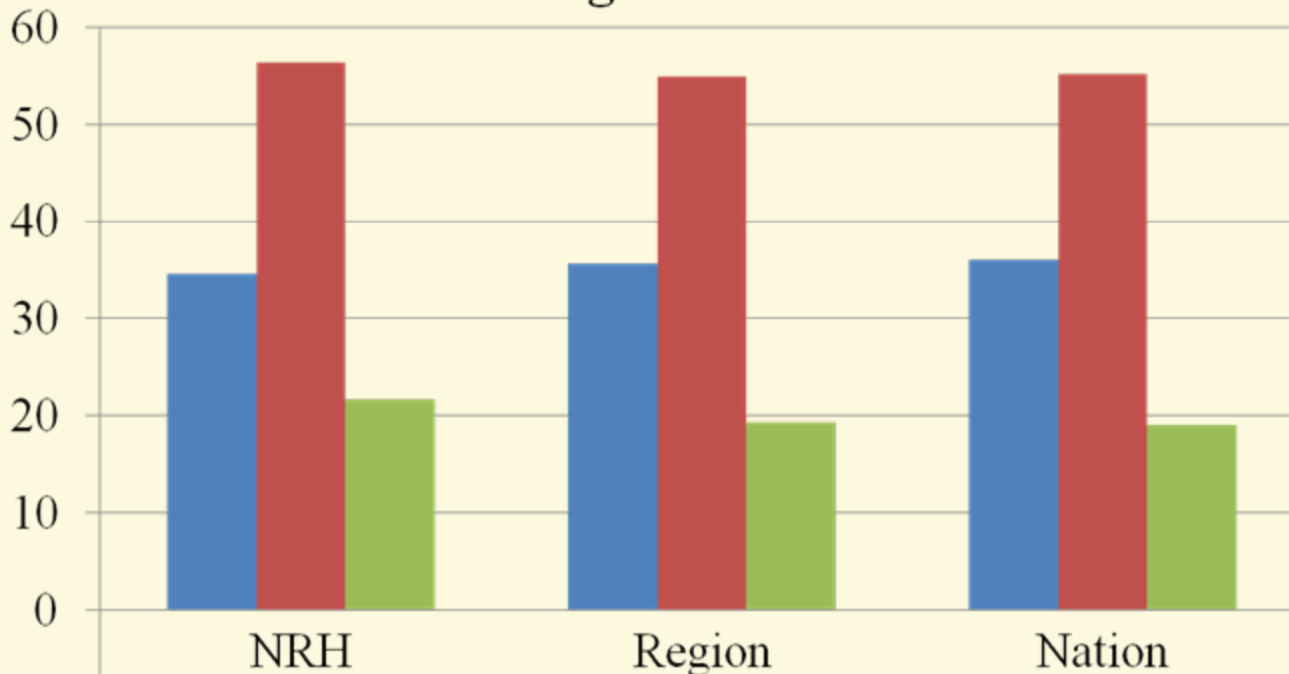
FIM Score Change Comparison



■ NRH	59.55	85.54	25.99
■ Region	61.4	85.42	24.02
■ Nation	60.45	83.05	22.6

2010 Outcomes Report

Walking FIM Scores



■ Admit	34.65	35.64	36.1
■ Discharge	56.28	54.95	55.2
■ Change	21.63	19.31	19.1