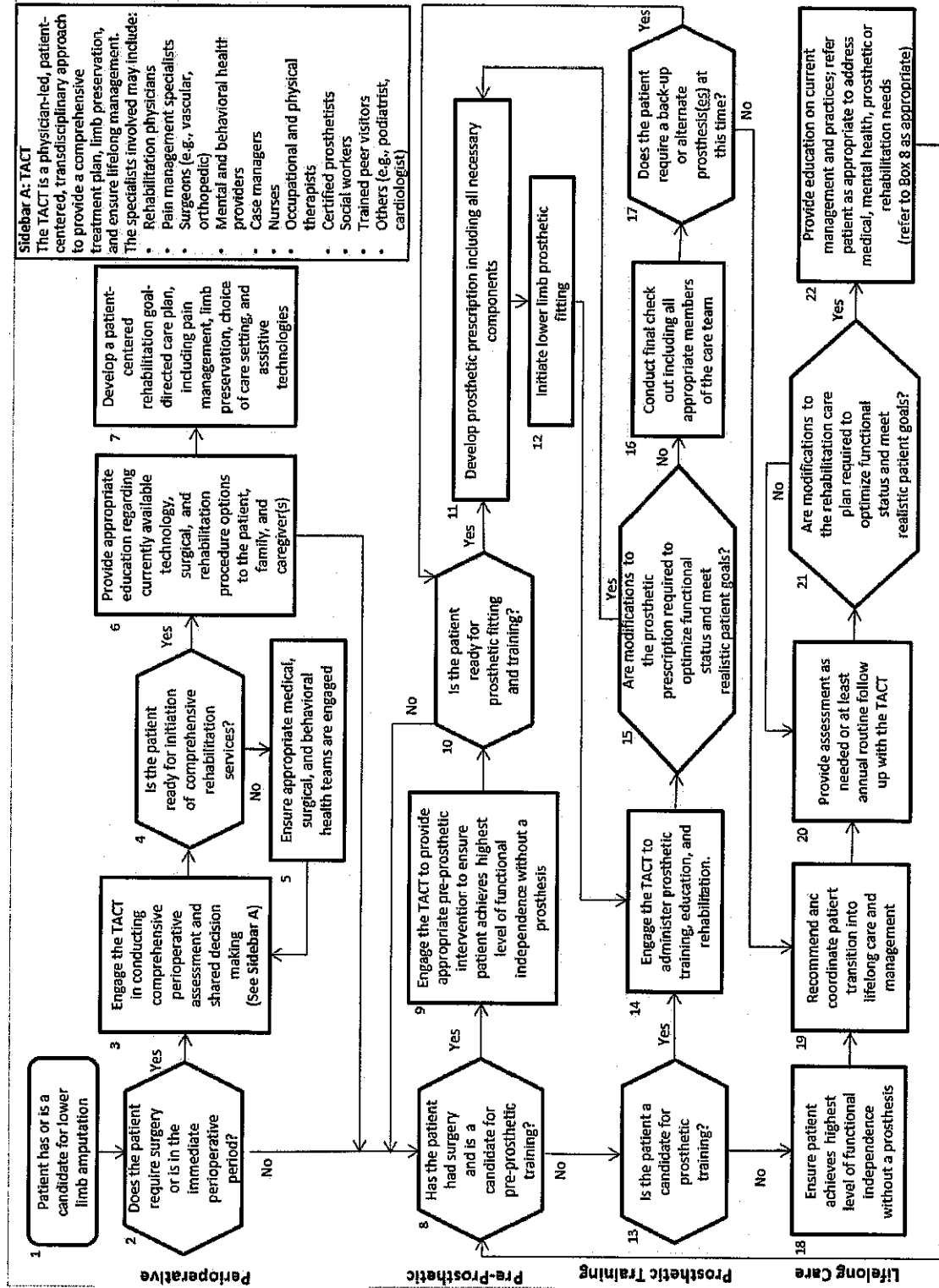
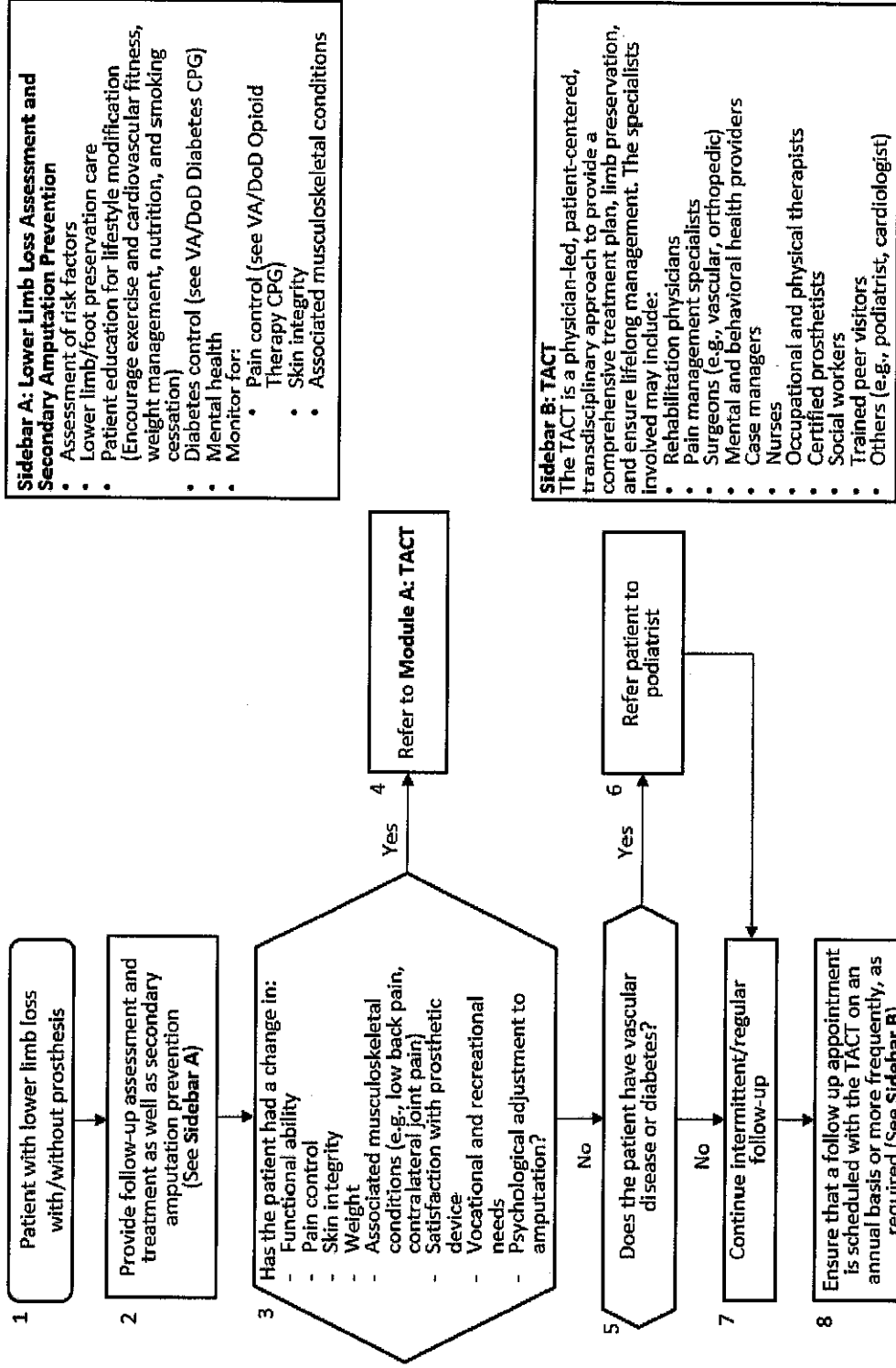


### Module A: Transdisciplinary Amputation Care Team Approach (TACT)



Abbreviations: TACT: Transdisciplinary Amputation Care Team

## Module B: Primary Care Follow-up and Lifelong Care



**Sidebar A: Lower Limb Loss Assessment and Secondary Amputation Prevention**

- Assessment of risk factors
- Lower limb/foot preservation care
- Patient education for lifestyle modification (encourage exercise and cardiovascular fitness, weight management, nutrition, and smoking cessation)
- Diabetes control (see VA/DoD Diabetes CPG)
- Mental health
- Monitor for:
  - Pain control (see VA/DoD Opioid Therapy CPG)
  - Skin integrity
  - Associated musculoskeletal conditions

**Sidebar B: TACT**  
The TACT is a physician-led, patient-centered, interdisciplinary approach to provide a comprehensive treatment plan, limb preservation, and ensure lifelong management. The specialists involved may include:

- Rehabilitation physicians
- Pain management specialists
- Surgeons (e.g., vascular, orthopedic)
- Mental and behavioral health providers
- Case managers
- Nurses
- Occupational and physical therapists
- Certified prosthetists
- Social workers
- Trained peer visitors
- Others (e.g., podiatrist, cardiologist)

Abbreviations: TACT: Transdisciplinary Amputation Care Team; VA/DoD Diabetes CPG: VA/DoD Clinical Practice Guideline for Management of Diabetes Mellitus in Primary Care; VA/DoD Opioid Therapy CPG: VA/DoD Clinical Practice Guideline for Opioid Therapy for Chronic Pain